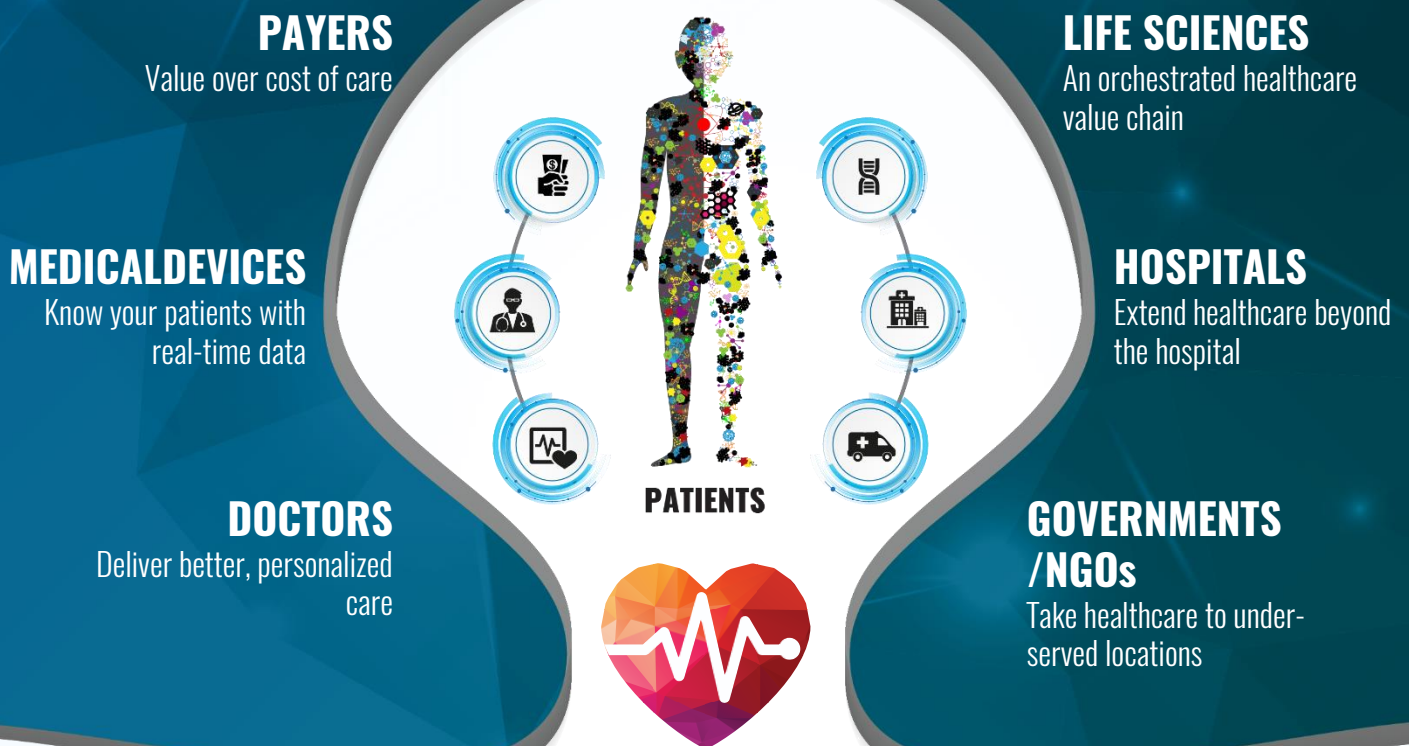


CONNECTSENSE DIGITAL HEALTHCARE PLATFORM

Transforming the way healthcare is delivered and accessed

Tech Mahindra

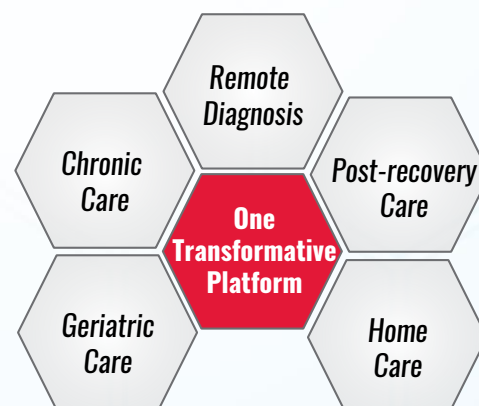


The **ConnectSense Digital Healthcare Platform** enables a world where wellness, diagnostics, prognostics, and recovery will seamlessly extend outside hospitals into people's homes and lives.

ConnectSense is the platform behind India's first HealthCare Exchange with a target of covering around 20 million+ lives and handling 87 million video /audio consultations. It uses IoT and digital convergence technologies to transform how healthcare is delivered and accessed ; taking healthcare to people's lives, irrespective of where they are.

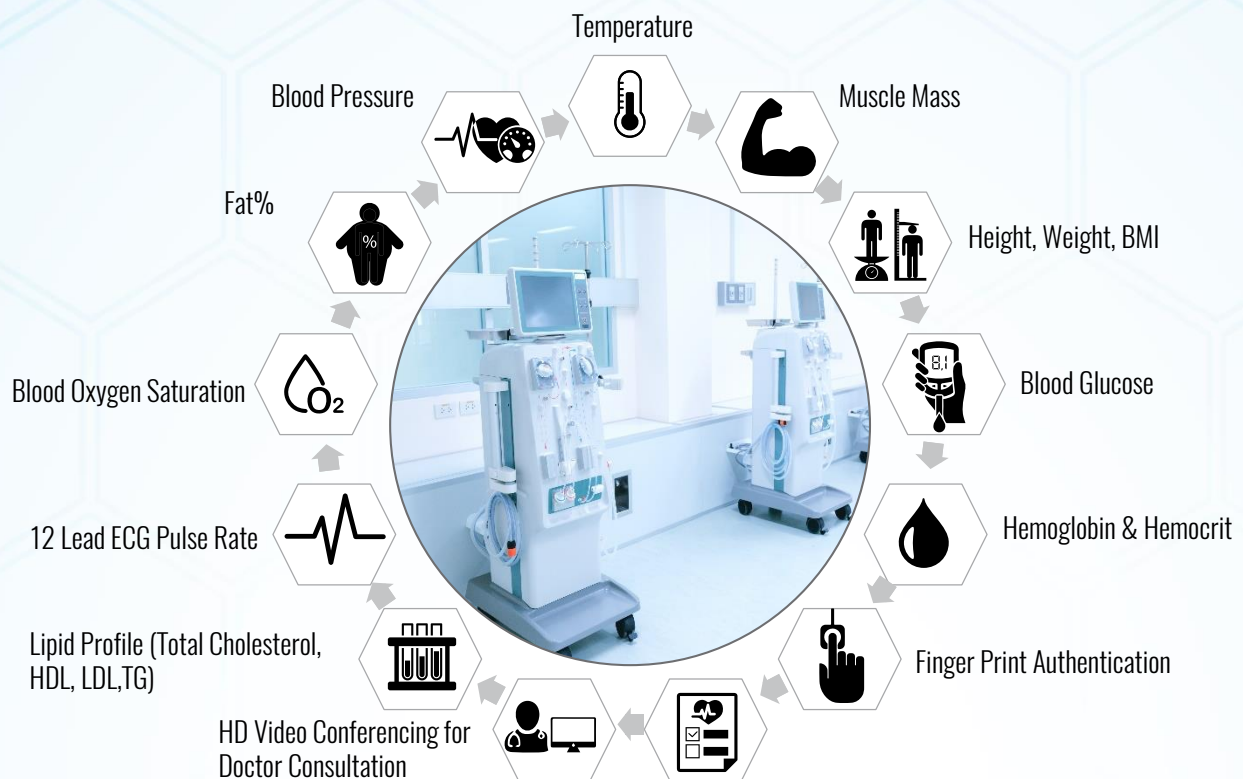
Why ConnectSense Digital Healthcare Platform..?

- Delivers a unique and a Connected Patient Experience
- Connects the entire healthcare value chain with a seamlessly integrated platform
- Transforms healthcare economics by enabling hospitals to deliver care for more patients with zero Capex addition
- Creates a significant new revenue opportunity for hospitals



Connected World.
Connected Experiences.

Health ATM- Smart Health Kiosks



Highlights and Key features:

- Automated health screening
- Live video-consultation with doctors
- Instant health report and prescription
- Instant delivery of medicines
- Manage and monitor your health on Mobile
- Anytime, Anywhere Remote Monitoring
- HIPAA compliant
- Integration of multiple diagnostic devices (ECG, Oximeter, SpO2, etc.) for acquiring vitals & wellness data
- Inter-operable with existing devices and protocols
- Built in support for SOS management and location services for effective management of emergency situations

INTEGRATED ENGINEERING SOLUTIONS (IES)

Is a Connected Engineering Solutions business unit of Tech Mahindra. At **Integrated Engineering Solutions**, customers are at the core of every innovation. We align Technology, Businesses and Customers through innovative frameworks. We deliver future-ready digital convergence solutions across Aerospace and Defense, Automotive, Industrial Equipment, Transportation, Consumer Products, Energy and Utilities, Healthcare and Hi-Tech products. Our 'Connected' solutions are designed to be platform agnostic, scalable, flexible, modular and leverage emerging technologies like Networking, Mobility, Analytics, Cloud, Security, Social and Sensors, that enable launching of smart products and deliver unique connected consumer experiences, weaving a connected world. Coupled with this, our strong capabilities in Electronics, Mechatronics and Mechanical Engineering along with domain understanding and product knowledge, bring excellence to the entire lifecycle of these connected ecosystems.

**Tech
Mahindra**

CONTACT US AT
Jompsan.Puthur@techmahindra.com
www.techmahindra.com

SOCIAL MEDIA
twitter.com/tech_mahindra
facebook.com/techmahindra